

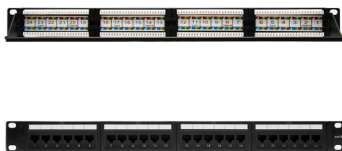
PATCH PANEL, (8P8C), FOR CONNECTING MALE RJ45

A patch panel is an efficient and flexible network device to keep your data centre or server room and make easier its relocation, addition or replacement of the cabling infrastructure in the future.



*10.21.4124

*10.21.3124



Use a patch panel to access easily to all of your cables and terminations.

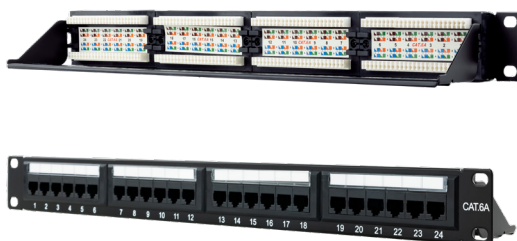


The patch panel centralises the wiring in one place, allowing administrators to make an easier relocation, addition or change of complex network architectures.



At Nanocable we have two patch panels: Cat 6 and Cat 6a.

*10.21.4124



Specifications:

- Insertion system: dual IDC
- 24 ports
- Width: 19 inches,
- Height: 1U (44.45 mm)
- TIA/EIA 568A and 568B standards.
- It accepts 24, 26, 23 and 22 AWG wires.
- Accepted sizes 24, 26, 23 and 22 AWG wires.
- Color: Black
- OEM Box

Reference	EAN	Category	Type
10.21.3124	8433281005907	6	Unshielded (UTP)
10.21.4124	8433281012059	6a	Unshielded (UTP)